

COMMUNITY FORESTS ARE TOOLS FOR RESILIENT ECOSYSTEMS



Nick Kuhn – Missouri Dept. of Conservation

Green and Gray and People



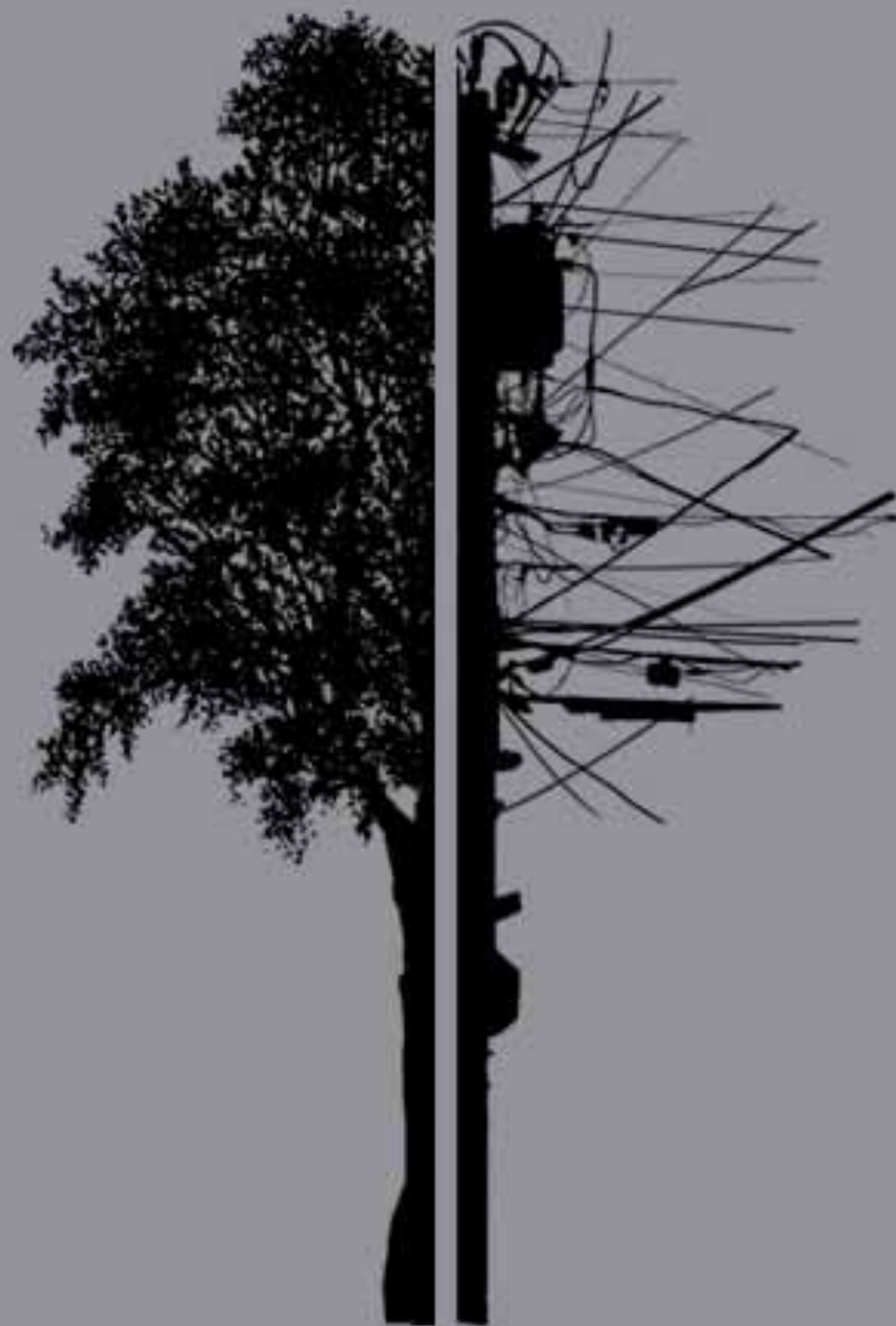
- Design and Materials
- Changing habits
- **Make nature part of the city**

*Google for photos but I have
links*









It is
Gray
AND
Green
n



Make nature part of the city



Make nature part of the city



Make nature part of the city



Make nature part of the city



City programs work with trees/plants

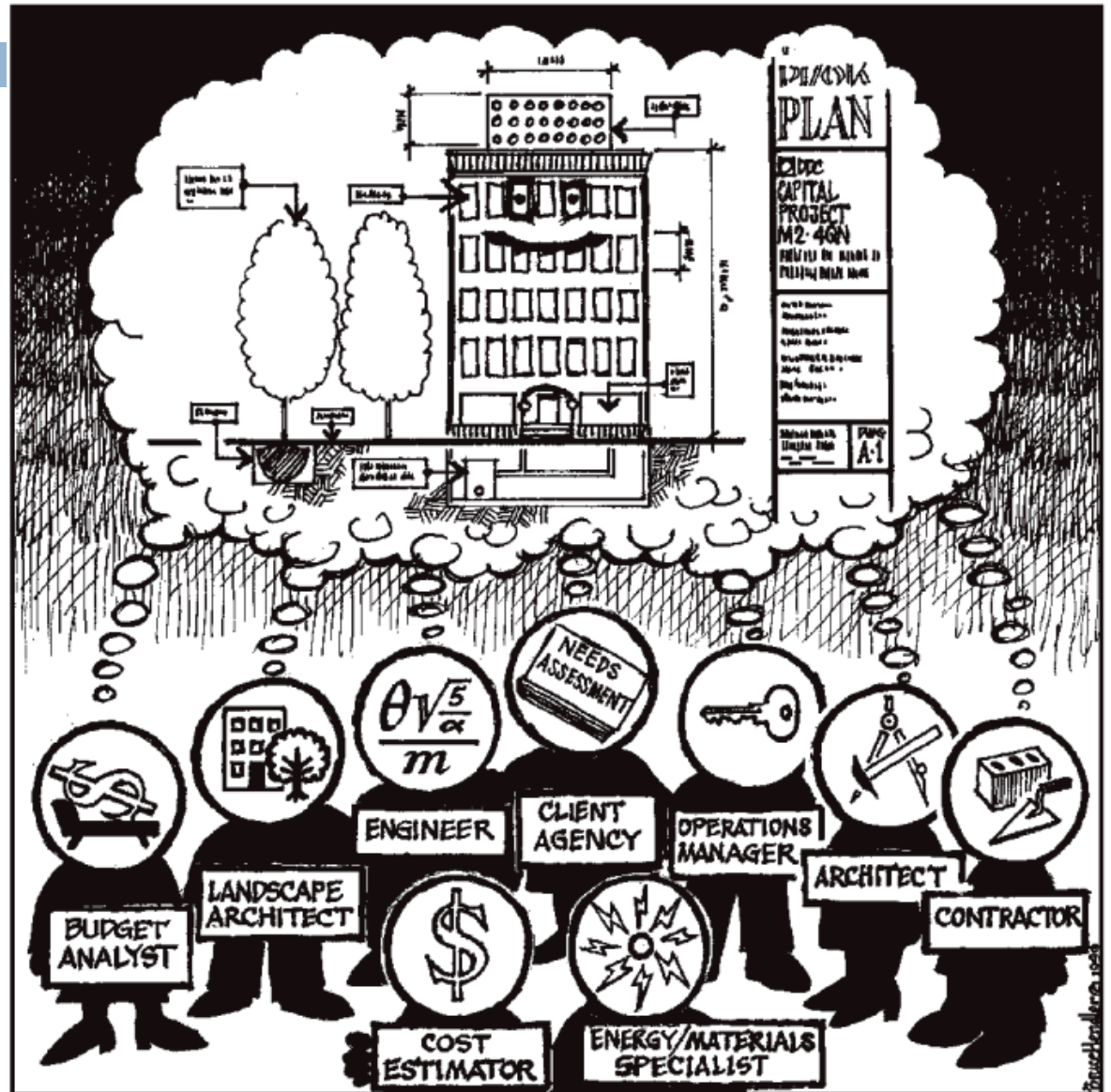


Illustration: Bruce Hendler

Adaptation is a long process



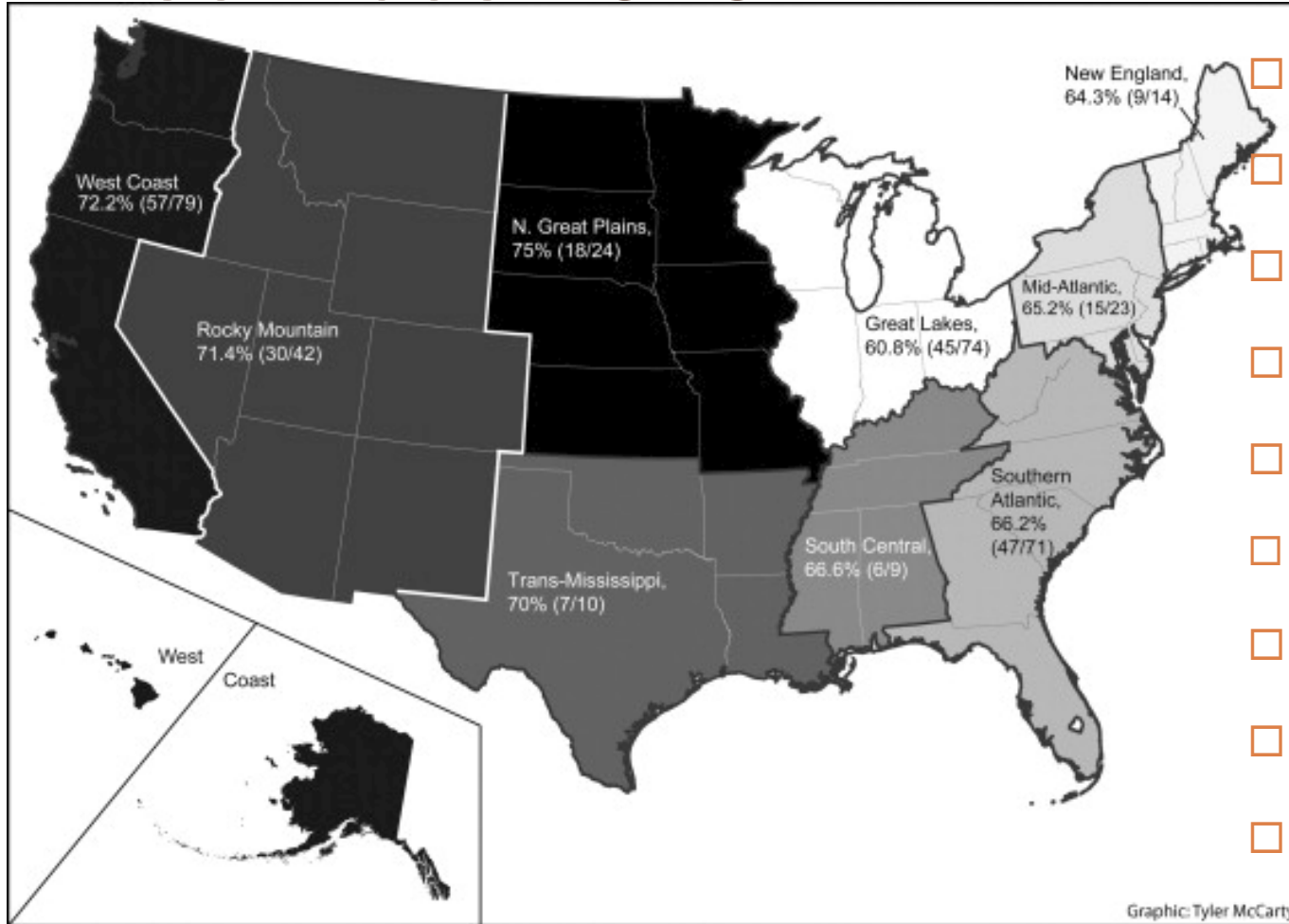
- Buffer the effects
- Reduce the impact
- Adapt
- Resiliency to change is something to aspire to

Every tree helps everyone



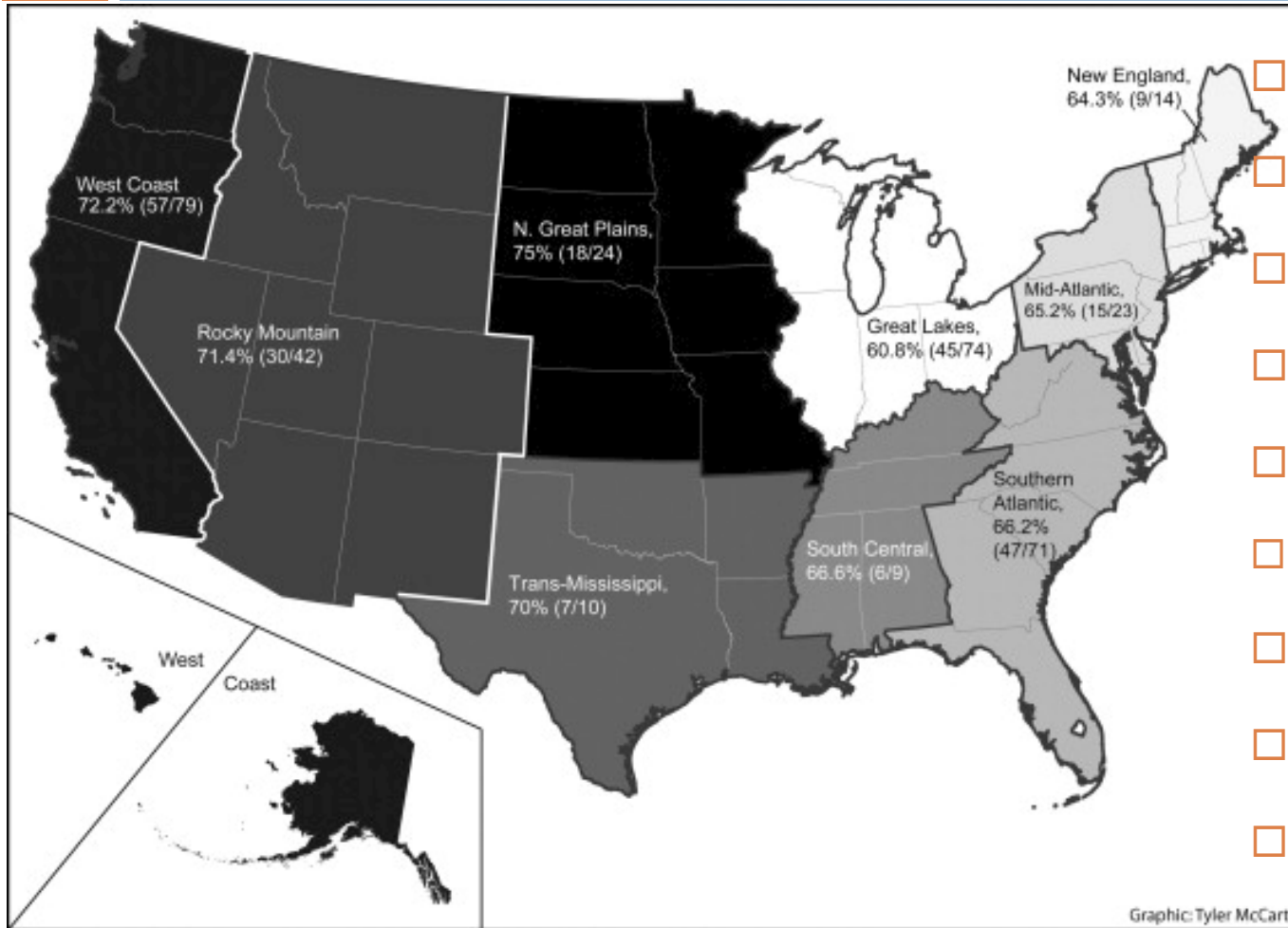
- Every state has someone like me
- Hopefully, someone like Tom and Randy is near
- USFS
- City Foresters

SIMA members involved in managing trees for environmental services 2010



- ☐ West 33%
- ☐ Rockies 46%
- ☐ Plains 29%
- ☐ Texas 30%
- ☐ South Cen 66
- ☐ South Atlantic 39
- ☐ Great lakes 33
- ☐ Mid Atlantic 43
- ☐ New England 35

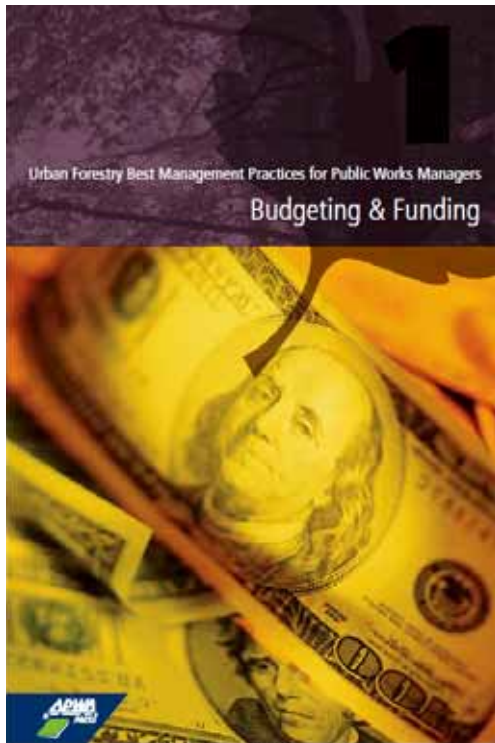
SMA members involved in managing trees for enviro services — *expected by 2015*



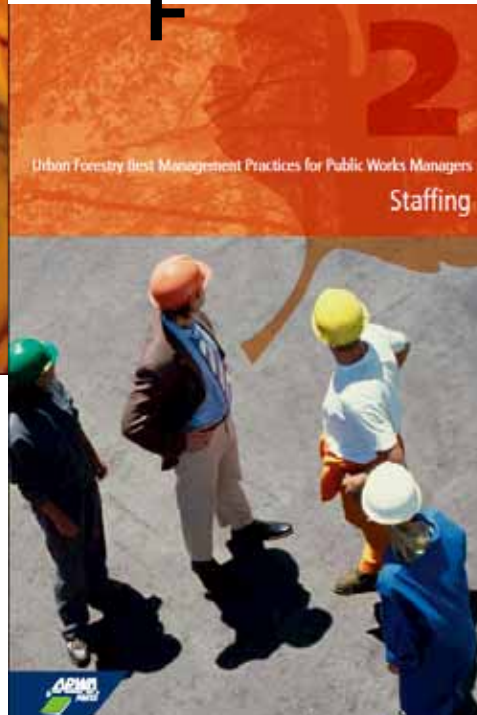
Graphic: Tyler McCarty

- West 72%
- Rockies 71%
- Plains 75%
- Texas 70%
- South Cen 66%
- South Atlantic 66
- Great lakes 60
- Mid Atlantic 65
- New England 64

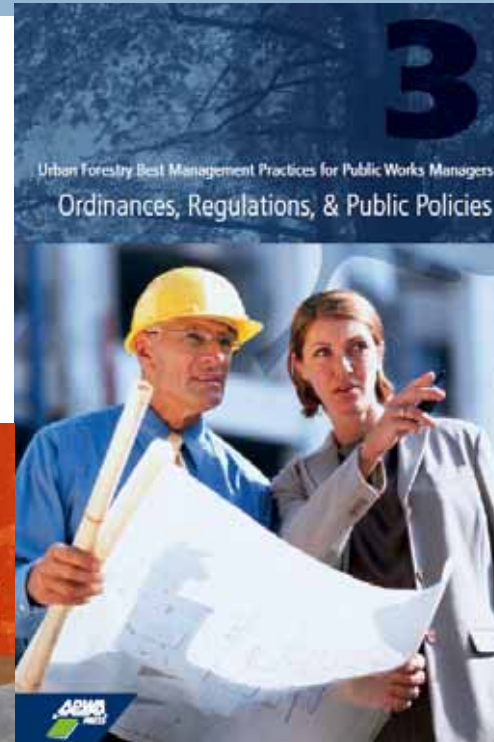
APWA



BUDGETS



STAFF



POLICIES



UF PLANS

APA

Planning the Urban Forest: Ecology, Economy, and Community Development



James C. Schwab, General Editor



American Planning Association

Planning Advisory Service
Report Number 555

USFS



- All of the previous documents and SMA would not happen without support of the USFS
- ▣ Recent USFS study expects 41% increase in existing urban area by 2060
- ▣ Competition for limited natural resources will increase

Global climate change study

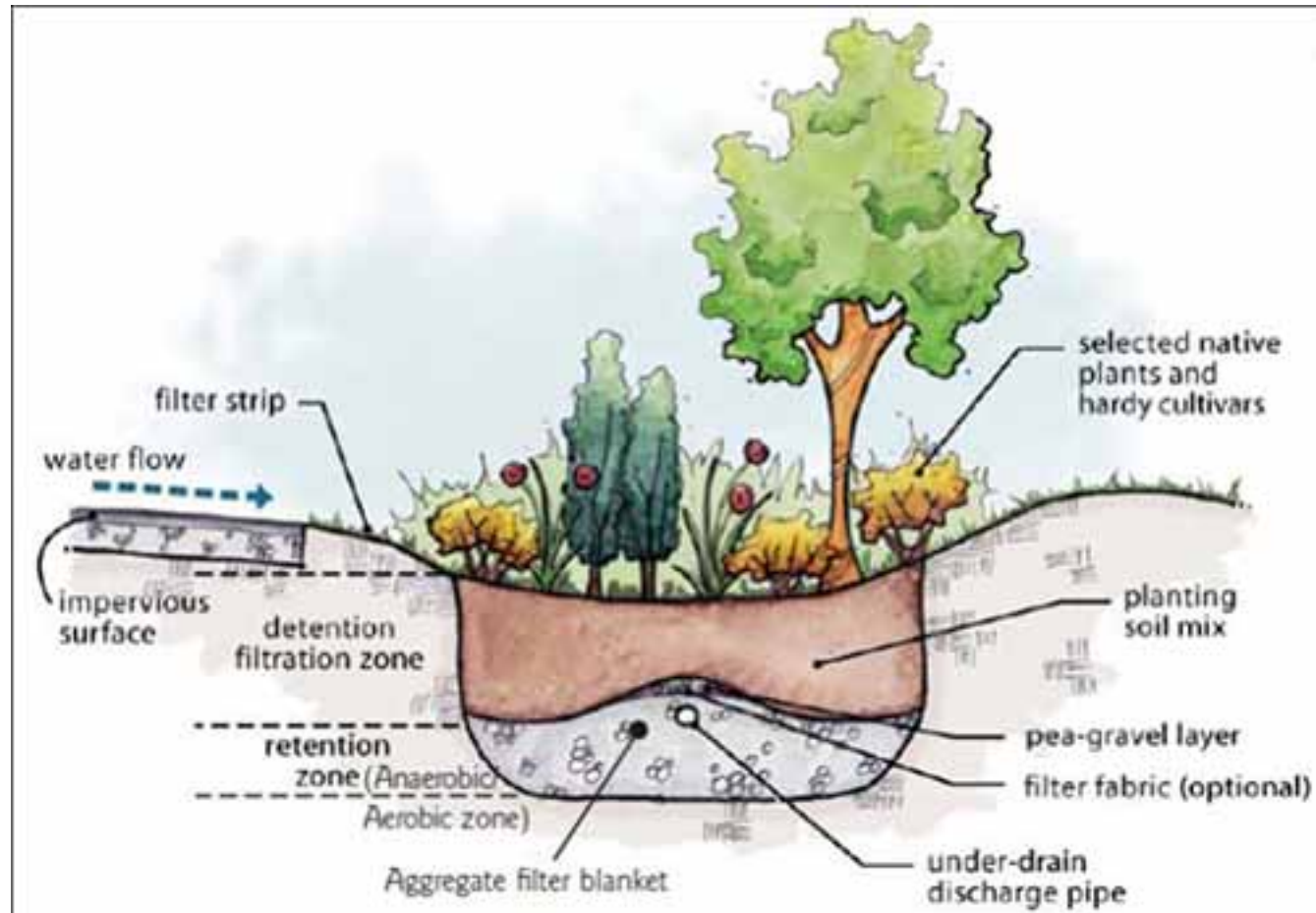


- **Urban vulnerability**
- **Land use and cover change**
- **Midwest**

Philadelphia



Yakima county, WA



Example Cities



- ▣ Chicago – pervious and more canopy
- ▣ Baltimore – watershed focus and a LTER site
- ▣ Toronto – Shade policy for UV reduction
- ▣ Houston – Urban Heat Island leader
- ▣ NYC – canopy increase
- ▣ Milwaukee – long term planning
- ▣ Washington DC – multiple methods
- ▣ Portland – bio-swales everywhere

Trees are the connection



- Nick Kuhn
- Missouri Dept. of Conservation
- Nick.kuhn@mdc.mo.gov